

Printing function in CRP 123/129

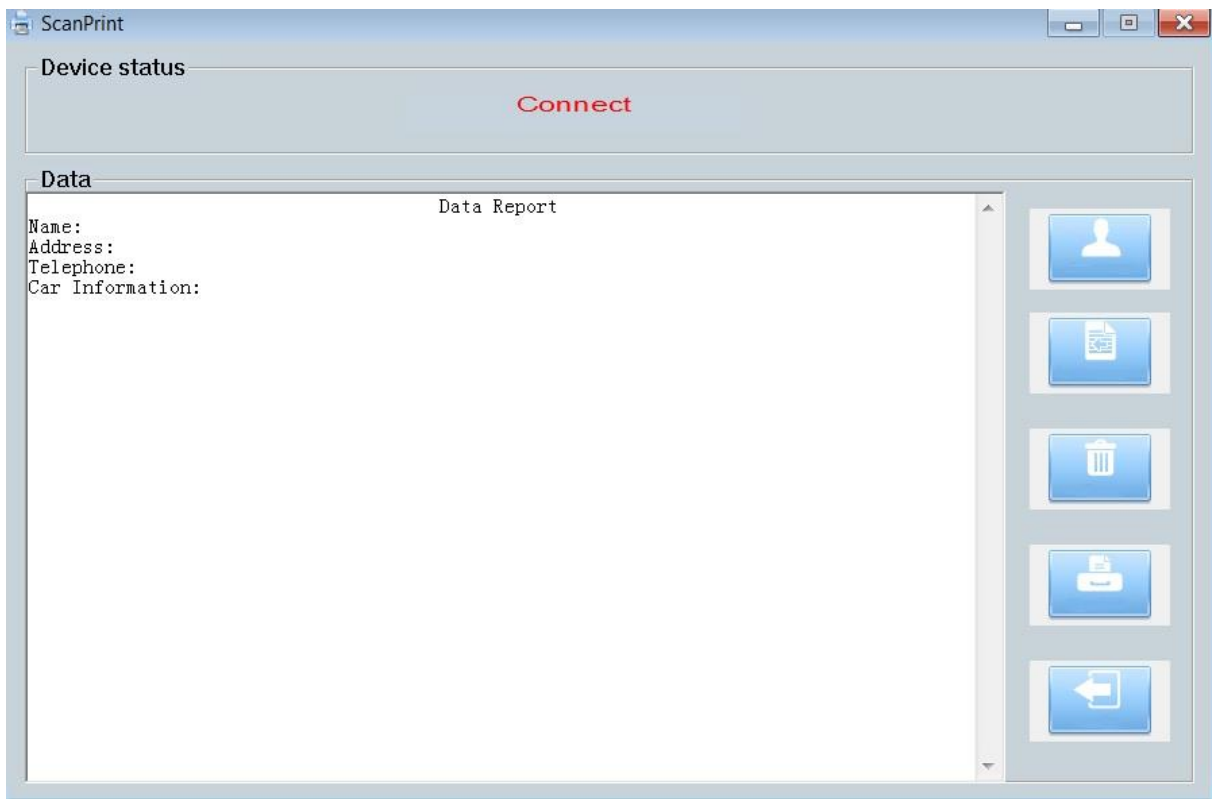
1. Install [updating Tool](#) (software version V1.04.000 or higher) on PC



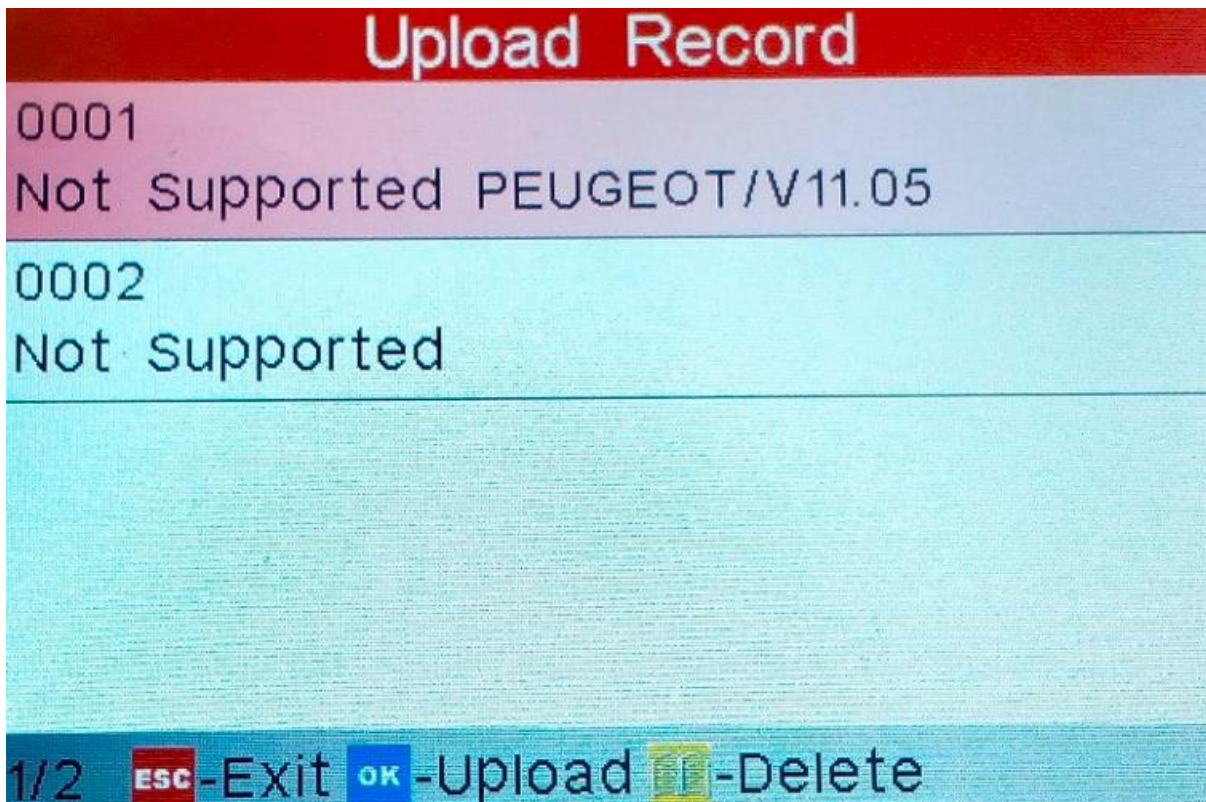
2. Connect CRP 123/129 with USB cable to PC (Sn. will be read out automatically)



3. Select **Print Manager**. It shows that device is connected.



4. Upload the recorded file from CRP to PC: Diagnose-Review->Upload Record



5. The test result will be transferred to PC and can be printed out

